

# LOUIS H. FARRELL SCHOOL

## 2021-22 SCHOOL PROGRESS REPORT ON EDUCATION AND EQUITY

School Code | 8380 Sector | District Network | Network 8  
 Principal Name | Mr Peter Jepsen  
 Address | 8300 Castor Ave  
 Phone | 215-400-3230 Website | farrell.philasd.org/  
 Report Type | K-8 School Grades in Report | K-8  
 Admissions Category | Neighborhood  
 Turnaround Model | N/A  
 Receives HS Report | No  
 Oct 1 Enrollment | 1046

### Student Enrollment and Demographics



- 0.1% American Indian / Alaskan Native
- 20.4% Asian
- 16.3% Black / African American
- 22.3% Hispanic / Latino
- 5.3% Multi Racial / Other
- 0.8% Native Hawaiian / Pacific Islander
- 35.0% White

**1184**

Total Number of Students Served for 10+ Days Over the Year

**13.3%**

% Students with IEPs

**33.3%**

% English Learners

**68.2%**

% Economically Disadvantaged

### Student Attendance

**52.6%**

% Students Attending at Least 95% of Instructional Days

**76.4%**

% Students Attending at Least 90% of Instructional Days

Score Level	Performance	Improvement	Level
<b>Level 5</b>			
<b>Performance</b> <i>At or Above Target in</i> <b>11.1 %</b> 1 out of 9 Eligible Metrics			
<b>Improvement</b> <b>Insufficient Data for Score</b>			
<b>Goal Performance (All Students)</b>			
<b>GOAL 1   PSSA ELA % of Students Proficient or Advanced (Grades 3-8)</b> <b>Score: 39.9 %</b> -2.6 pts from 2021-2022 target <b>NOT MEETING</b> no data prior year			
<b>GOAL 2   PSSA ELA % of Students Proficient or Advanced (Grade 3)</b> <b>Score: 26.3 %</b> -13.0 pts from 2021-2022 target <b>NOT MEETING</b> no data prior year			
<b>GOAL 3   PSSA Math % of Students Proficient or Advanced (Grades 3-8)</b> <b>Score: 20.1 %</b> -8.6 pts from 2021-2022 target <b>NOT MEETING</b> no data prior year			
● Meeting Target ● Not Meeting Target			
	<b>American Indian / Alaskan Native</b> Insufficient Data for Score	Insufficient Data for Score	
	<b>Asian</b> Insufficient Data for Score	Insufficient Data for Score	
	<b>Black / African American</b> Insufficient Data for Score	Insufficient Data for Score	
	<b>Hispanic / Latino</b> Insufficient Data for Score	Insufficient Data for Score	
	<b>Multi Racial / Other</b> Insufficient Data for Score	Insufficient Data for Score	
	<b>Native Hawaiian / Pacific Islander</b> Insufficient Data for Score	Insufficient Data for Score	
	<b>White</b> Insufficient Data for Score	Insufficient Data for Score	
	<b>English Learners</b> Insufficient Data for Score	Insufficient Data for Score	
	<b>Students with IEPs</b> Insufficient Data for Score	Insufficient Data for Score	
	<b>Economically Disadvantaged</b> Insufficient Data for Score	Insufficient Data for Score	

# Reading/ELA: Every Student Reads On or Above Grade Level

## Goal 1 - Reading Grades 3-8

School Code | 8380 School Name | Louis H. Farrell School

**Goal 1:** The percentage of students in grades 3-8 who are proficient on the state ELA assessment will grow from 35.7% in August 2019 to 65.0% by August 2026

### PSSA ELA: % of Students Proficient or Advanced, Grades 3-8

**All Students, 709 students**

**Score: 39.9 %**



**2021-2022 Target: 42.5 %**

*-2.6 pts from target*

**2025-2026 Goal: 65.0 %**

*-25.1 pts from target*



- Meeting Target
- Not Meeting Target

**American Indian / Alaskan Native**

Insufficient Sample

**Asian, 135 students**

**Score: 51.1 %**

*8.6 pts above target*

MEETING

no data prior year



**Black / African American, 115 students**

**Score: 32.2 %**

*-10.3 pts from target*

NOT MEETING

no data prior year



**Hispanic / Latino, 162 students**

**Score: 37.7 %**

*-4.8 pts from target*

NOT MEETING

no data prior year



**Multi Racial / Other, 43 students**

**Score: 51.2 %**

*8.7 pts above target*

MEETING

no data prior year



**Native Hawaiian / Pacific Islander**

Insufficient Sample

**White, 248 students**

**Score: 36.7 %**

*-5.8 pts from target*

NOT MEETING

no data prior year



**English Learners, 222 students**

**Score: 25.7 %**

*-16.8 pts from target*

NOT MEETING

no data prior year



**Students with IEPs, 92 students**

**Score: 14.1 %**

*-28.4 pts from target*

NOT MEETING

no data prior year



**Economically Disadvantaged, 481 students**

**Score: 38.7 %**

*-3.8 pts from target*

NOT MEETING

no data prior year



# Reading/ELA: Every Student Reads On or Above Grade Level

## Goal 2 - Reading Grade 3

School Code | 8380 School Name | Louis H. Farrell School

**Goal 2:** The percentage of 3rd grade students who are proficient on the state ELA assessment will grow from 32.5% in August 2019 to 62.0% by August 2026

### PSSA ELA: % of Students Proficient or Advanced, Grade 3

**All Students, 114 students**

**Score: 26.3 %**



**2021-2022 Target: 39.3 %**

-13.0 pts from target

**2025-2026 Goal: 62.0 %**

-35.7 pts from target

NOT MEETING

no data prior year



- Meeting Target
- Not Meeting Target

**American Indian / Alaskan Native**

Insufficient Sample

**Asian, 27 students**

**Score: 40.7 %**

1.4 pts above target

MEETING

no data prior year



**Black / African American, 20 students**

**Score: 15.0 %**

-24.3 pts from target

NOT MEETING

no data prior year



**Hispanic / Latino, 29 students**

**Score: 27.6 %**

-11.7 pts from target

NOT MEETING

no data prior year



**Multi Racial / Other**

Insufficient Sample

**Native Hawaiian / Pacific Islander**

Insufficient Sample

**White, 37 students**

**Score: 21.6 %**

-17.7 pts from target

NOT MEETING

no data prior year



**English Learners, 30 students**

**Score: 13.3 %**

-26.0 pts from target

NOT MEETING

no data prior year



**Students with IEPs**

Insufficient Sample

**Economically Disadvantaged, 78 students**

**Score: 28.2 %**

-11.1 pts from target

NOT MEETING

no data prior year



# Math & Science: Every Student Performs On or Above Grade Level

## Goal 3 - Math Grades 3-8

School Code | 8380 School Name | Louis H. Farrell School

**Goal 3:** The percentage of students in grades 3-8 who are proficient on the state Math assessment will grow from 21.6% in August 2019 to 52.0% by August 2026

### PSSA Math: % Students Proficient or Advanced, Grades 3-8

All Students, 711 students

Score: **20.1 %**



2021-2022 Target: **28.7 %**

-8.6 pts from target

2025-2026 Goal: **52.0 %**

-31.9 pts from target

NOT MEETING

no data prior year

### PSSA Science

% of Students Proficient or Advanced in Science (Grades 4 and 8)

**54.5 %**

133 out of 244 students

American Indian / Alaskan Native

Insufficient Sample

Asian, 134 students

Score: **41.0 %**

12.3 pts above target

MEETING

no data prior year

Black / African American, 118 students

Score: **9.3 %**

-19.4 pts from target

NOT MEETING

no data prior year

Hispanic / Latino, 164 students

Score: **14.6 %**

-14.1 pts from target

NOT MEETING

no data prior year

Multi Racial / Other, 43 students

Score: **9.3 %**

-19.4 pts from target

NOT MEETING

no data prior year

Native Hawaiian / Pacific Islander

Insufficient Sample

White, 246 students

Score: **19.5 %**

-9.2 pts from target

NOT MEETING

no data prior year

English Learners, 221 students

Score: **14.9 %**

-13.8 pts from target

NOT MEETING

no data prior year

Students with IEPs, 93 students

Score: **6.5 %**

-22.2 pts from target

NOT MEETING

no data prior year

Economically Disadvantaged, 481 students

Score: **18.1 %**

-10.6 pts from target

NOT MEETING

no data prior year

# Climate, Culture & Opportunity

## Guardrail 1 - Welcoming and Supportive Schools

School Code | 8380 School Name | Louis H. Farrell School

**Guardrail 1:** Every school will be a safe, welcoming and healthy place where our students, staff and community want to be and learn each day. This means that our schools will be: 1) environmentally safe and clean; and 2) spaces with inclusive climates that provide students with access to robust social, emotional, and mental health supports.

### School Climate Score

Score: 6.5



2021-2022 Target: 7.0  
-0.5 pts from target

2025-2026 Goal: 7.0  
-0.5 pts from target

NOT MEETING

no data prior year



### School Climate Survey

6.3/10  
Student Rating

8.4/10  
Parent Rating

6.1/10  
Teacher Rating

### School Instruction Score

Score: 7.5



2021-2022 Target: 8.0  
-0.5 pts from target

2025-2026 Goal: 8.0  
-0.5 pts from target

NOT MEETING

no data prior year



### School Instruction Survey

7.7/10  
Student Rating

7.1/10  
Parent Rating

7.6/10  
Teacher Rating

- Meeting Target
- Not Meeting Target



Yes

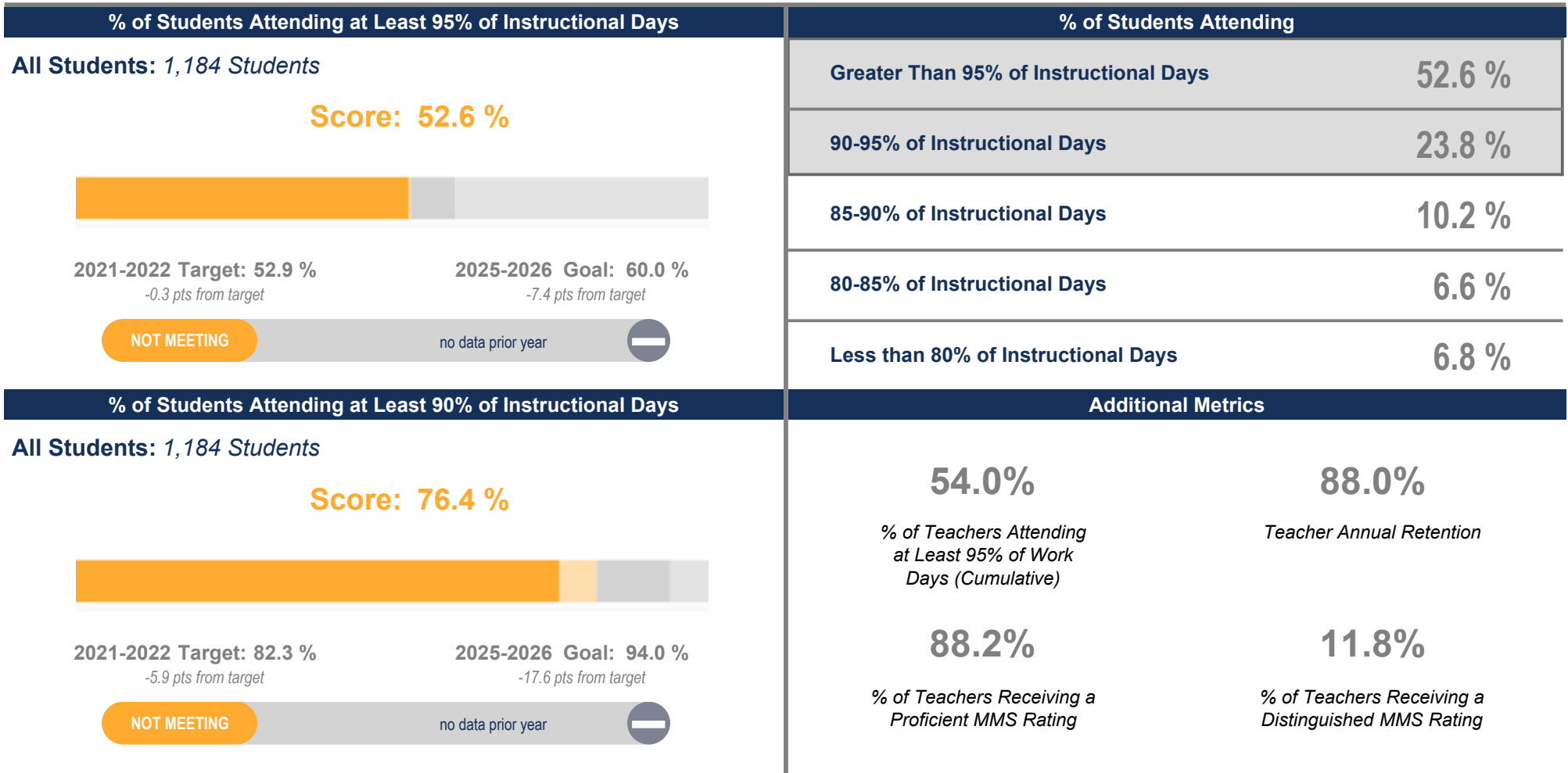
School Has at Least 2 Behavioral/Mental Health Support FTEs per 500 Students

# Climate, Culture & Opportunity

## Guardrail 1 - Welcoming and Supportive Schools

School Code | 8380 School Name | Louis H. Farrell School

**Guardrail 1:** Every school will be a safe, welcoming and healthy place where our students, staff and community want to be and learn each day. This means that our schools will be: 1) environmentally safe and clean; and 2) spaces with inclusive climates that provide students with access to robust social, emotional, and mental health supports.



- Meeting Target
- Not Meeting Target

# Climate, Culture & Opportunity

## Guardrail 2 - Enriching and Well-rounded School Experiences

## Guardrail 3 - Partnering with Parents / Family Members

School Code | 8380 School Name | Louis H. Farrell School

**Guardrail 2:** Every student will have a well-rounded education with co-curricular opportunities, including arts and athletics, integrated into the school experience.

**Guardrail 3:** Every parent and guardian will be welcomed and encouraged to be partners in their child's school community.

### % of Students Participating in Visual / Performing Arts

% of Students  
Participating in Visual /  
Performing Arts

84.2 %

818 out of 971 students

### School Relationship Score

Score: 7.5



2021-2022 Target: 8.0

-0.5 pts from target

NOT MEETING

no data prior year

### Additional Metrics



Yes

School Has a SAC/Parent Advisory Group



Yes

School Has a SAC/Parent Advisory Group That Meets Regularly



4

Number of SAC/Parent Advisory Group Meetings

● Meeting Target

● Not Meeting Target

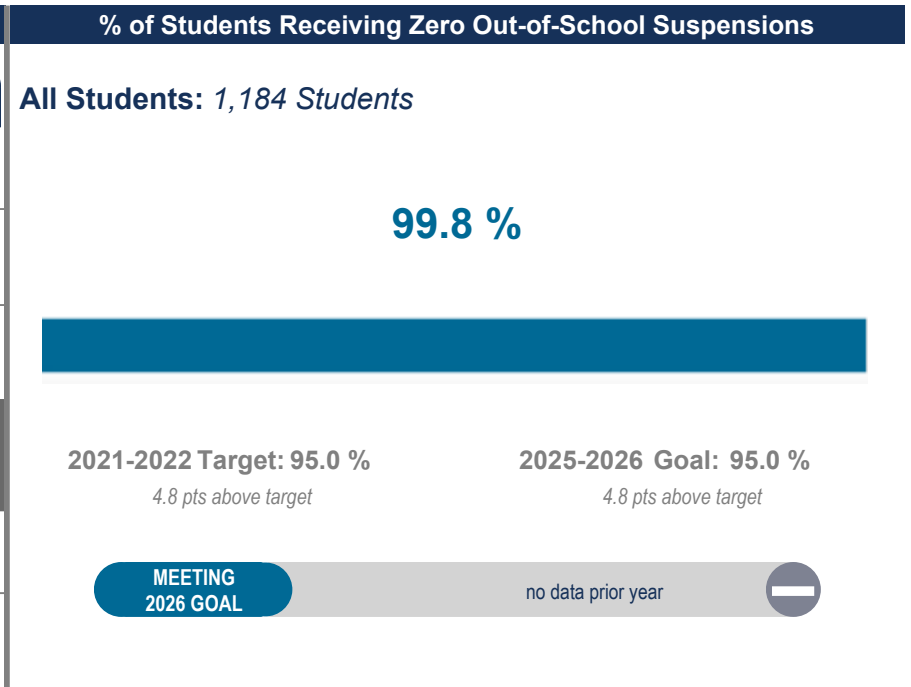
# Climate, Culture & Opportunity

## Guardrail 4 - Addressing Racist Practices

School Code | 8380 School Name | Louis H. Farrell School

**Guardrail 4:** Our students' potential will not be limited by practices that perpetuate systemic racism and hinder student achievement.

Suspension Disproportionality			
	% of Enrollment (Total Enrollment)		% of Suspensions Given to Each Subgroup
All Students		(1046)	
American Indian / Alaskan Native	0.1 %	(1)	0.0 %
Asian	20.4 %	(213)	0.0 %
Black / African American	16.3 %	(170)	0.0 %
Hispanic / Latino	22.3 %	(233)	100.0 %
Multi Racial / Other	5.3 %	(55)	0.0 %
Native Hawaiian / Pacific Islander	0.8 %	(8)	0.0 %
White	35.0 %	(366)	0.0 %
English Learners	33.3 %	(348)	0.0 %
Students with IEPs	13.3 %	(139)	60.0 %
Economically Disadvantaged	68.2 %	(713)	100.0 %



### % of Students Qualified to Attend Criteria-Based High Schools

All Students	Black / African American	Hispanic / Latino
92.5 %	Insufficient Sample	88.9 %

- Meeting Target
- Not Meeting Target